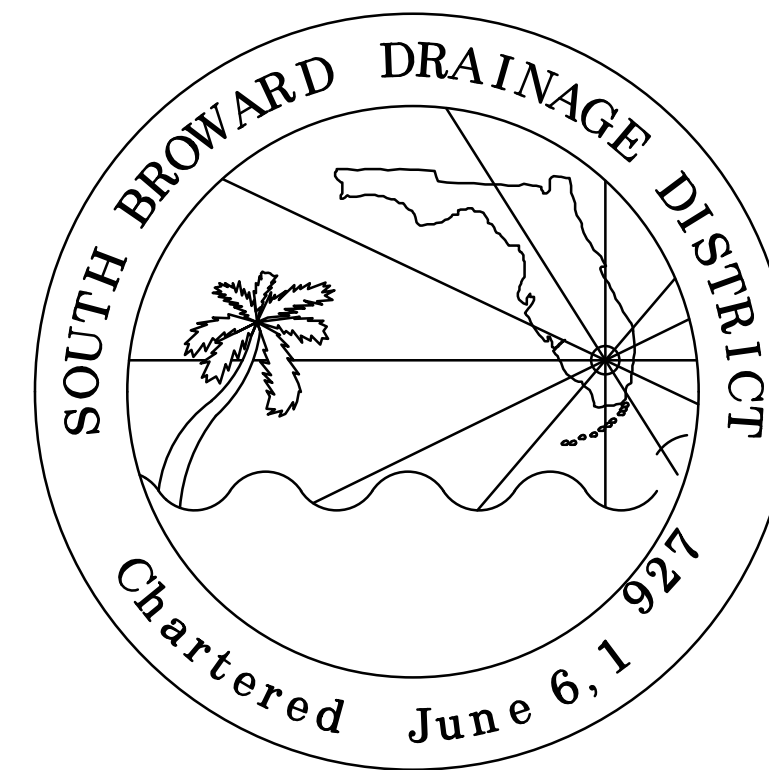
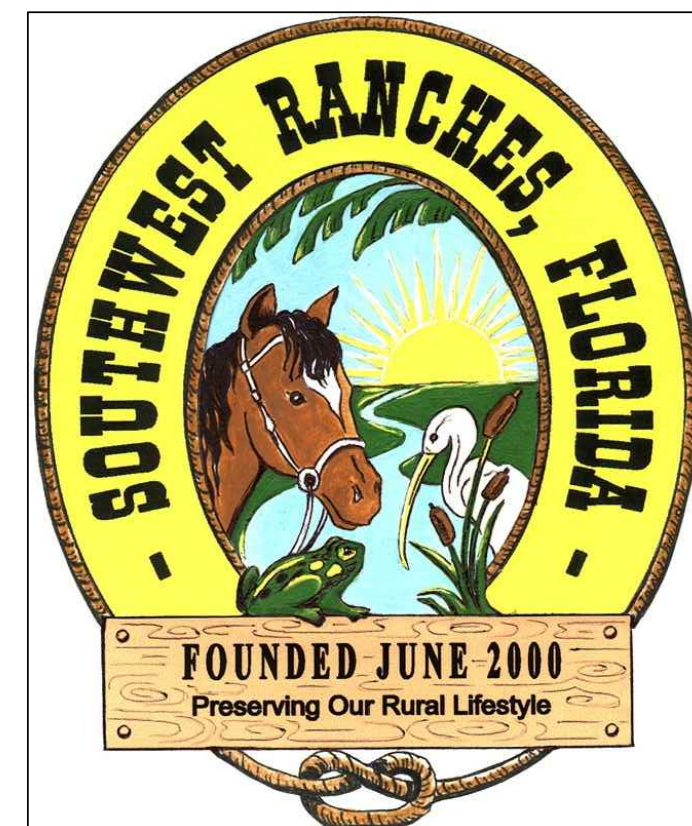


TOWN OF SOUTHWEST RANCHES & SOUTH BROWARD DRAINAGE DISTRICT DYKES ROAD PIPE LINING PROJECT

TOWN OF SOUTHWEST RANCHES
13400 GRIFFIN ROAD
SOUTHWEST RANCHES, FLORIDA 33330



SOUTH BROWARD DRAINAGE DISTRICT
6591 SW 160th AVE.
SOUTHWEST RANCHES, FLORIDA 33331

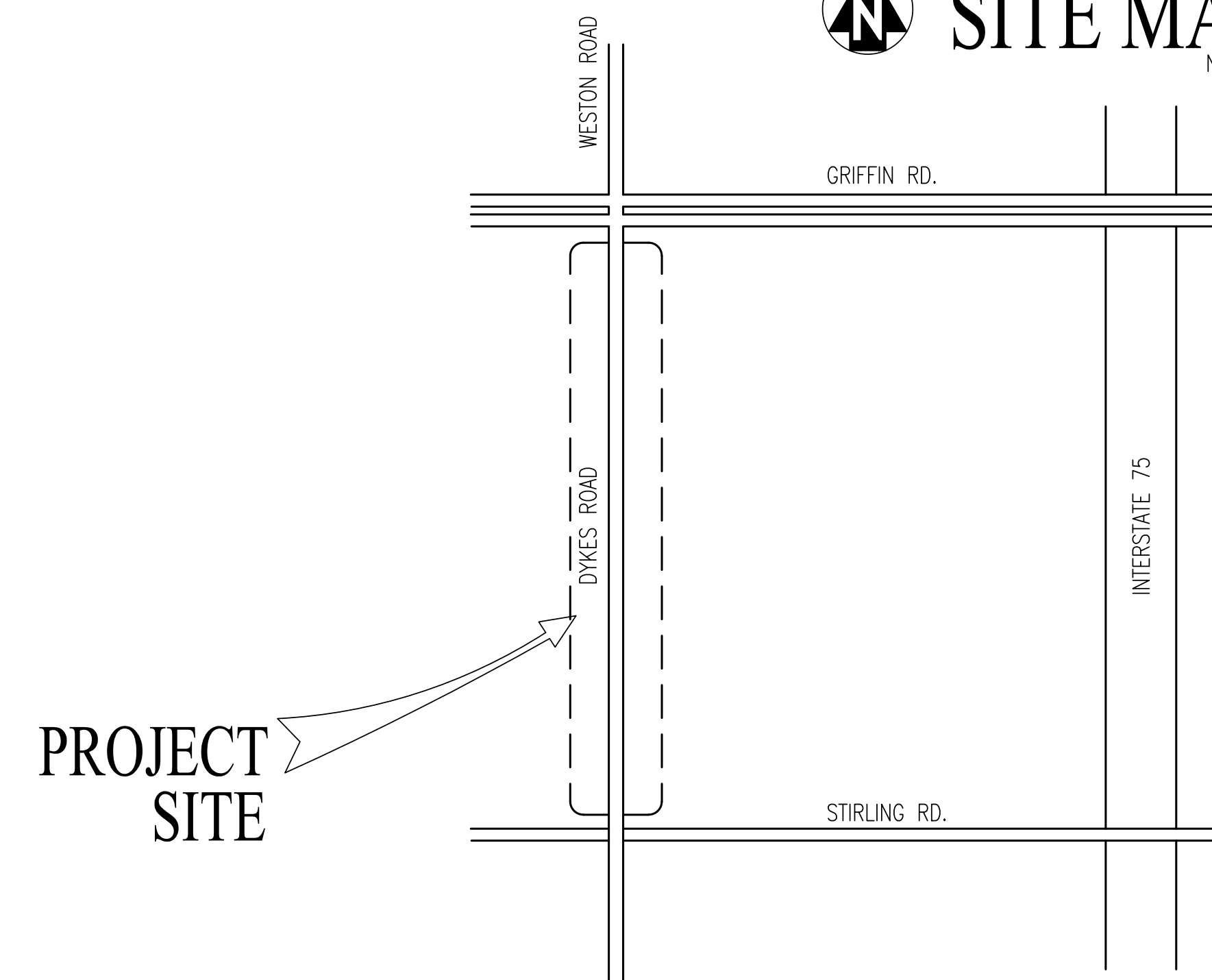


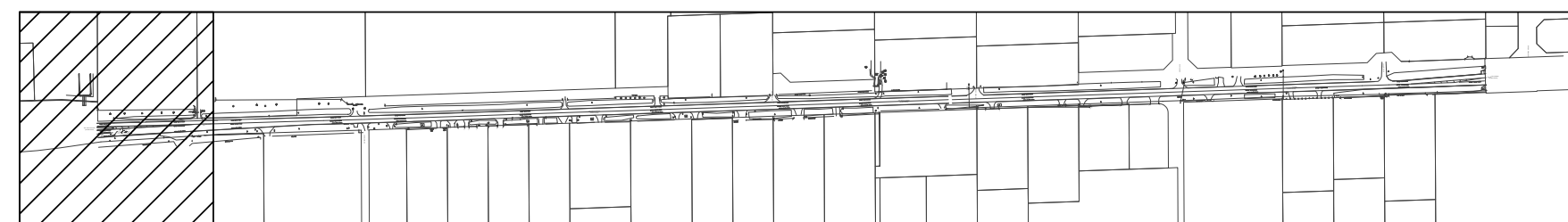
Know what's below.
Call before you dig.

DRAWING INDEX:

COVER SHEET	- 1
ENGINEERING PLAN	- 2
ENGINEERING PLAN	- 3
ENGINEERING PLAN	- 4
ENGINEERING PLAN	- 5
ENGINEERING PLAN	- 6
ENGINEERING PLAN	- 7
ENGINEERING PLAN	- 8
SBDD NOTES	- 9

SITE MAP N.T.S.





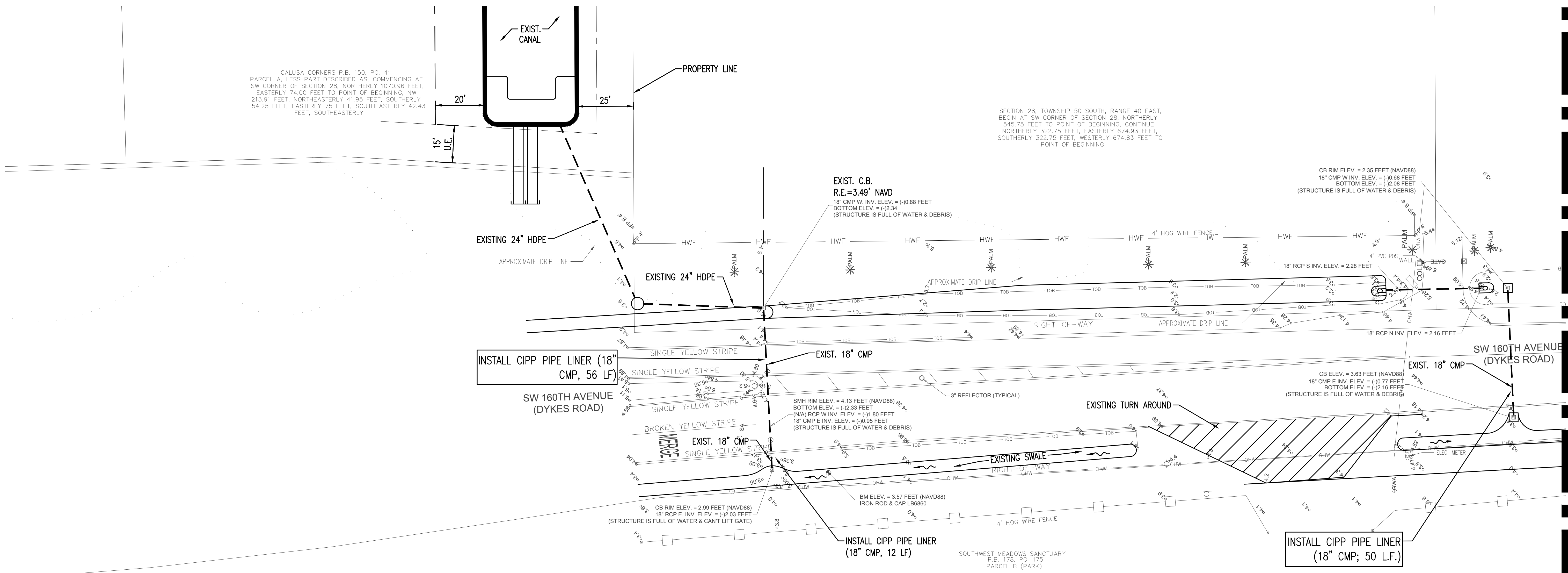
KEY MAP



NO SCALE

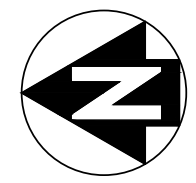
CALUSA CORNERS P.B. 150, PG. 41
PARCEL A, LESS PART DESCRIBED AS, COMMENCING AT
SW CORNER OF SECTION 28, NORTHERLY 1070.96 FEET,
EASTERLY 74.00 FEET TO POINT OF BEGINNING, NW
213.91 FEET, NORTHEASTERLY 41.95 FEET, SOUTHERLY
54.25 FEET, EASTERLY 75 FEET, SOUTHEASTERLY 42.43
FEET, SOUTHEASTERLY

SECTION 28, TOWNSHIP 50 SOUTH, RANGE 40 EAST,
BEGIN AT SW CORNER OF SECTION 28, NORTHERLY
545.75 FEET TO POINT OF BEGINNING, CONTINUE
NORTHERLY 322.75 FEET, EASTERLY 674.93 FEET,
SOUTHERLY 322.75 FEET, WESTERLY 674.83 FEET TO
POINT OF BEGINNING



MATCHLINE (SEE SHEET 2 OF 11)

GRADING & DRAINAGE PLAN



SCALE: 1"=20'-0"

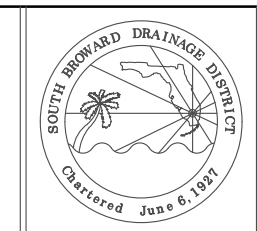
NOTES:
• ALL ELEVATIONS ARE BASED ON NAVD '88 DATUM
• CONVERSION FROM NAVD '88 TO NGVD '29 = 1.51'

NO	DATE	REVISION	BY	NO	DATE	REVISION	BY
1							

SOUTH BROWARD DRAINAGE DISTRICT
6591 SW 160th AVE
SOUTHWEST RANCHES, FL. 33331

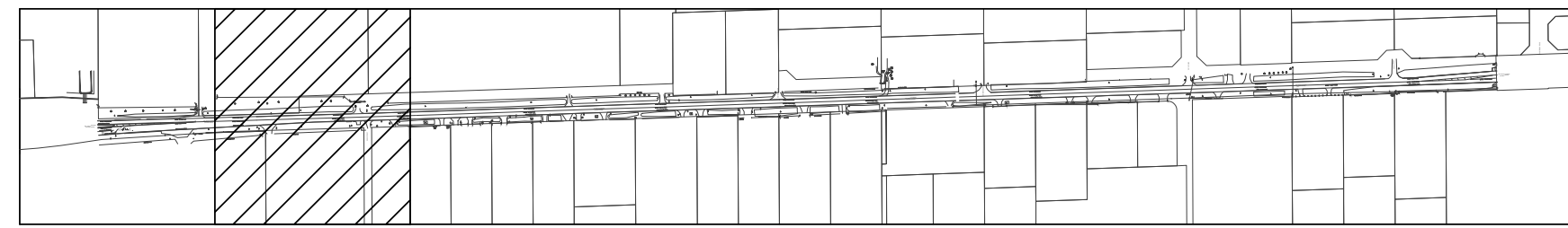
ENGINEERING PLAN
SOUTHWEST RANCHES, FLORIDA
DYKES RD PIPE LINING PLAN

DRAWN BY:
J.K.S.
APPROVED BY:
K.M.H.
DATE 2-17-20

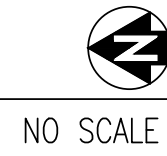


SCALE AS NOTED
PROJECT No
CAD FILE

SHEET
1 OF 9



KEY MAP

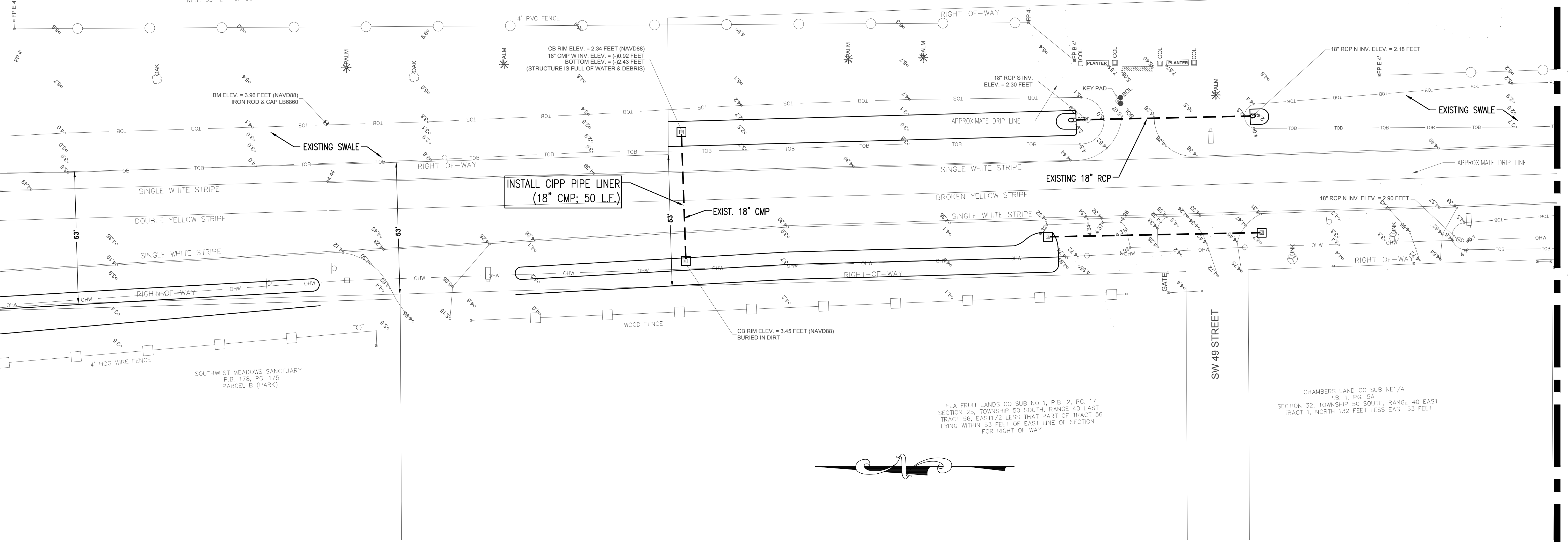


NO SCALE

SECTION 28, TOWNSHIP 50 SOUTH, RANGE 40 EAST,
BEGIN AT SW CORNER OF SECTION 28, NORTHERLY
545.75 FEET, EAST 674.83 FEET, NORTH 177.38 FEET,
EASTERLY 647.06 FEET, SOUTHERLY 723.15 FEET,
WESTERLY 1322.77 FEET TO POINT OF BEGINNING, LESS
WESTERLY 55 FEET OF SOUTH 223 FEET

MATCHLINE (SEE SHEET 1 OF 11)

MATCHLINE (SEE SHEET 3 OF 11)



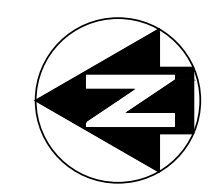
INSTALL CIPP PIPE LINER
(18" CMP; 50 L.F.)

EXIST. 18" CMP

EXISTING 18" RCP

EXISTING SWALE

GRADING & DRAINAGE PLAN



SCALE: 1"=20'-0"

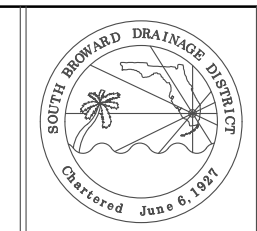
NOTES:
• ALL ELEVATIONS ARE BASED ON NAVD '88 DATUM.
• CONVERSION FROM NAVD '88 TO NGVD '29 = 1.51'

NO	DATE	REVISION	BY	NO	DATE	REVISION	BY
1			KH				

SOUTH BROWARD DRAINAGE DISTRICT
6591 SW 160th AVE
SOUTHWEST RANCHES, FL. 33331

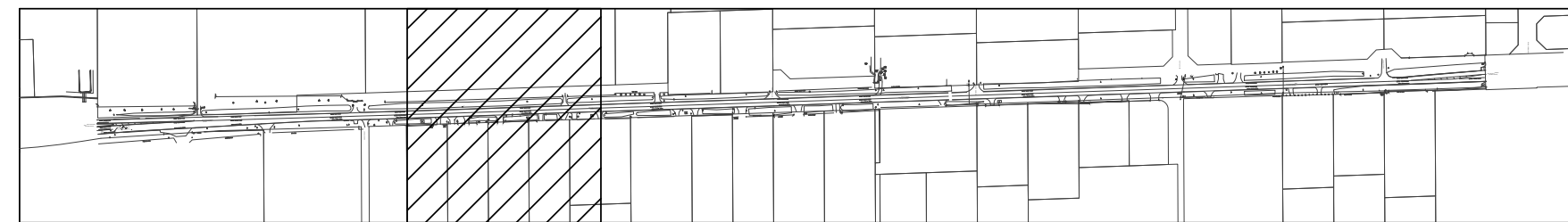
ENGINEERING PLAN
SOUTHWEST RANCHES, FLORIDA
DYKES RD PIPE LINING PLAN

DRAWN BY:
J.K.S.
APPROVED BY:
K.M.H.
DATE 2-17-20

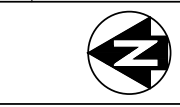


SCALE AS NOTED
PROJECT No
CAD FILE

SHEET
2 OF 9



KEY MAP

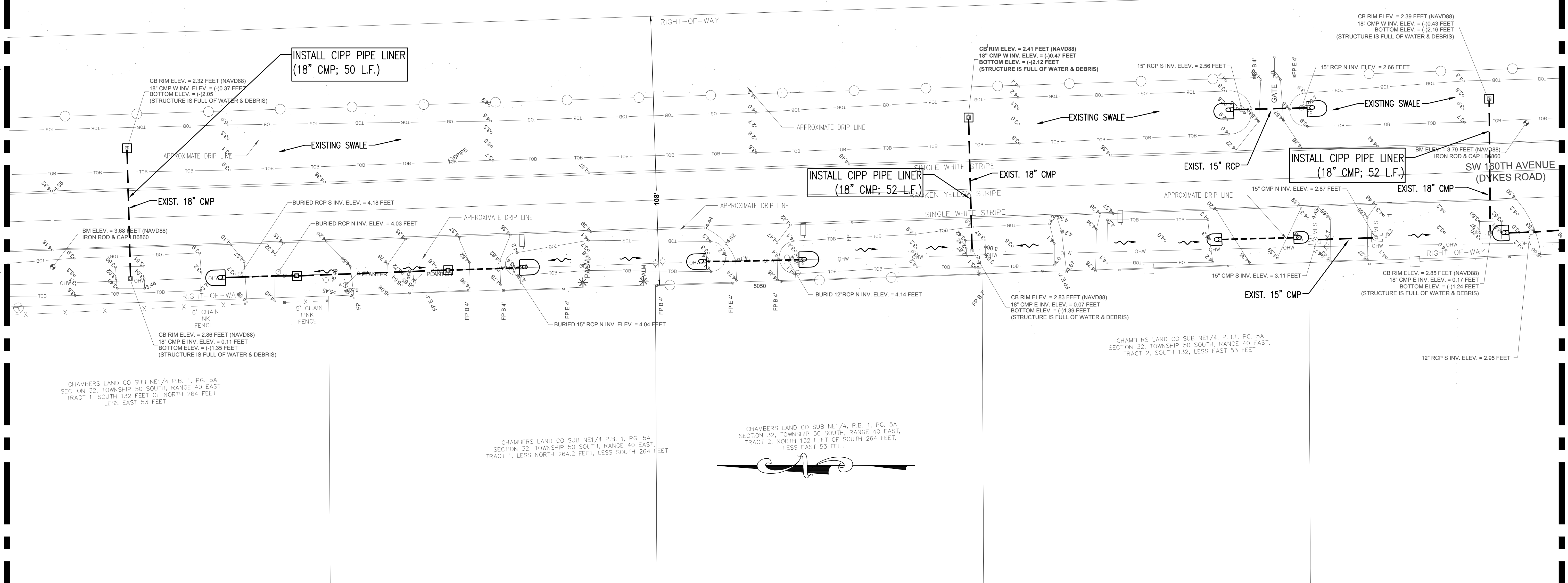


NO SCALE

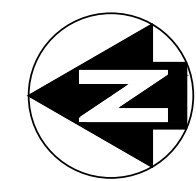
SECTION 28, TOWNSHIP 50 SOUTH, RANGE 40 EAST
BEGINNING AT SW CORNER OF SECTION 28, NORTHERLY
545.75 FEET, EAST 674.83 FEET, NORTH 177.38 FEET,
EASTERLY 647.06 FEET, SOUTHERLY 723.15 FEET,
WESTERLY 1322.77 FEET TO POINT OF BEGINNING,
LESS WEST 55 FEET OF SOUTH 223 FEET.

MATCHLINE (SEE SHEET 2 OF 11)

MATCHLINE (SEE SHEET 4 OF 11)



GRADING & DRAINAGE PLAN



SCALE: 1"=20'-0"

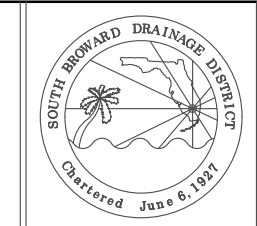
NOTES:
• ALL ELEVATIONS ARE BASED ON NAVD '88 DATUM
• CONVERSION FROM NAVD '88 TO NGVD '29 = 1.51'

NO	DATE	REVISION	BY	NO	DATE	REVISION	BY
1			KH				

SOUTH BROWARD DRAINAGE DISTRICT
6591 SW 160th AVE
SOUTHWEST RANCHES, FL. 33331

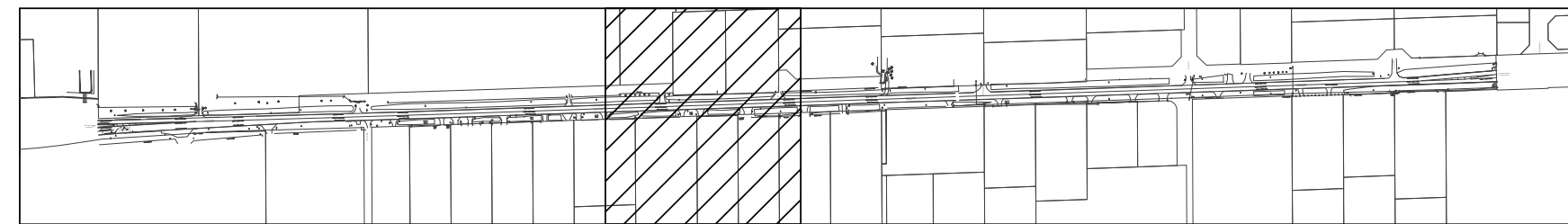
ENGINEERING PLAN
SOUTHWEST RANCHES, FLORIDA
DYKES RD PIPE LINING PLAN

DRAWN BY:
J.K.S.
APPROVED BY:
K.M.H.
DATE 2-17-20

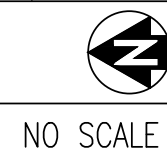


SCALE AS NOTED
PROJECT No.
CAD FILE

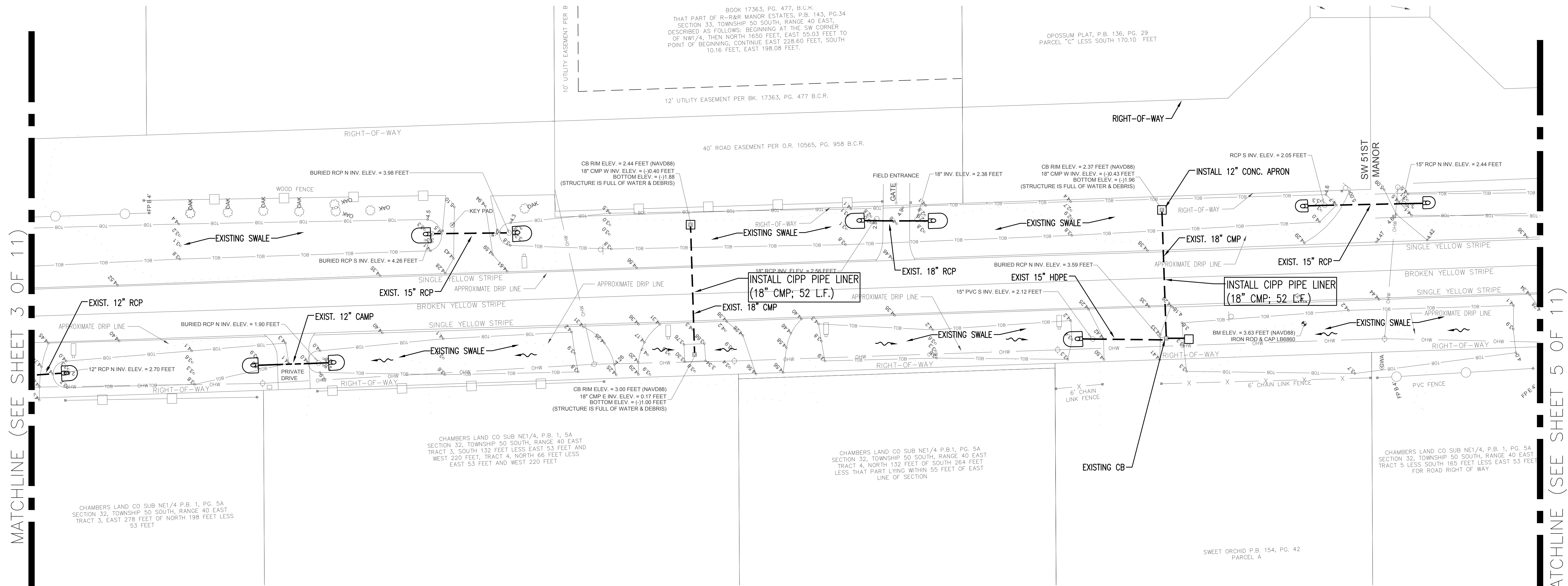
SHEET
3 OF 9



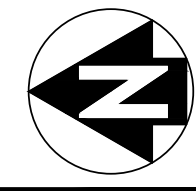
KEY MAP



NO SCALE



GRADING & DRAINAGE PLAN



SCALE: 1"=20'-0"

NOTES:
 • ALL ELEVATIONS ARE BASED ON NAVD '88 DATUM
 • CONVERSION FROM NAVD '88 TO NGVD '29 = 1.51'

MATCHLINE (SEE SHEET 3 OF 11)

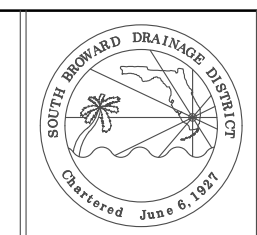
MATCHLINE (SEE SHEET 5 OF 11)

NO	DATE	REVISION	BY	NO	DATE	REVISION	BY
1			KH				

SOUTH BROWARD DRAINAGE DISTRICT
 6591 SW 160th AVE
 SOUTHWEST RANCHES, FL. 33331

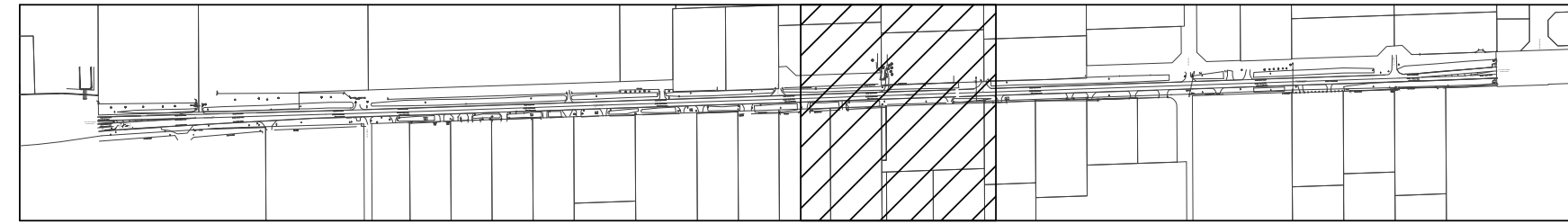
ENGINEERING PLAN
 SOUTHWEST RANCHES, FLORIDA
 DYKES RD PIPE LINING PLAN

DRAWN BY:
 J.K.S.
 APPROVED BY:
 K.M.H.
 DATE 2-17-20

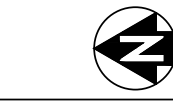


SCALE AS NOTED
 PROJECT No.
 CAD FILE

SHEET
 4 OF 9



KEY MAP

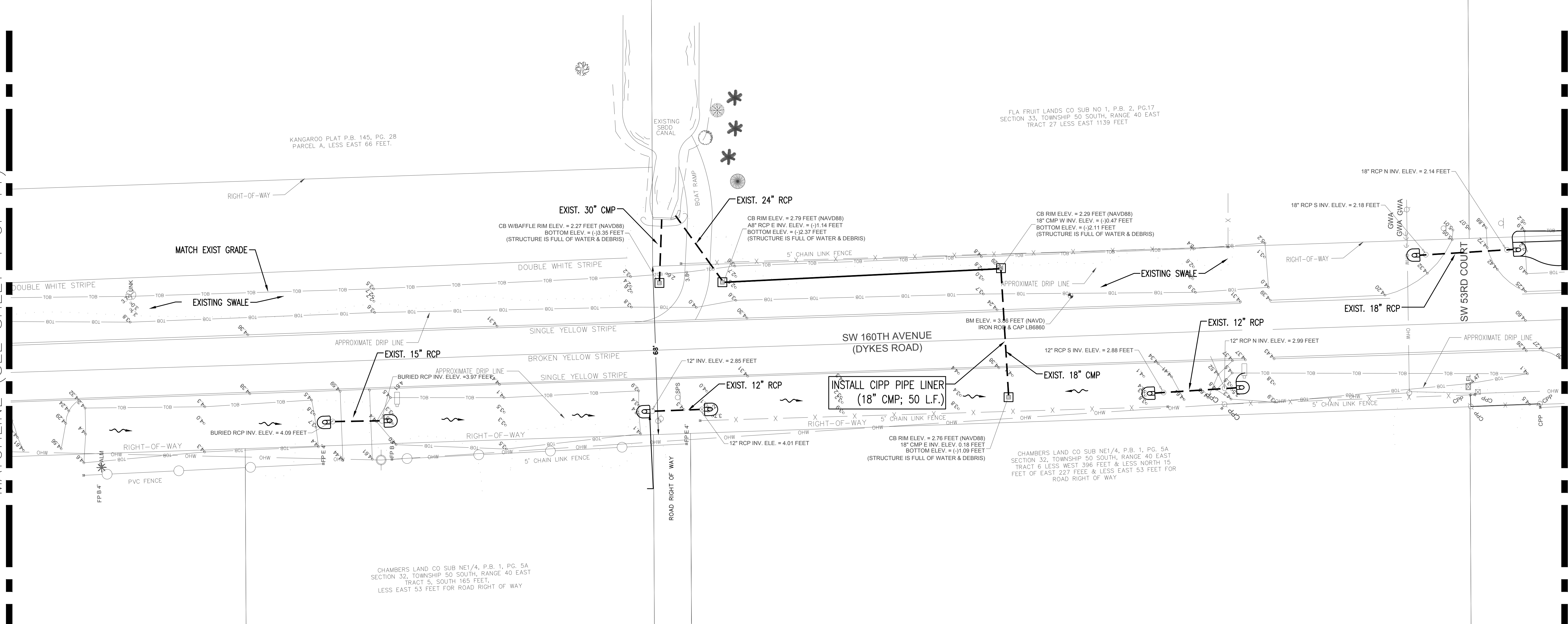


NO SCALE

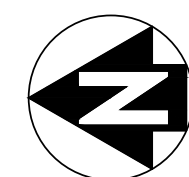
MATCHLINE (SEE SHEET 4 OF 11)

MATCHLINE (SEE SHEET 6 OF 11)

NO SCALE



GRADING & DRAINAGE PLAN



SCALE: 1"=20'-0"

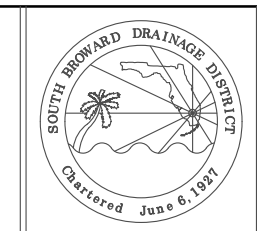
NOTES:
 • ALL ELEVATIONS ARE BASED ON NAVD '88 DATUM.
 • CONVERSION FROM NAVD '88 TO NGVD '29 = 1.51'

NO	DATE	REVISION	BY	NO	DATE	REVISION	BY
1			KH				

SOUTH BROWARD DRAINAGE DISTRICT
 6591 SW 160th AVE
 SOUTHWEST RANCHES, FL. 33331

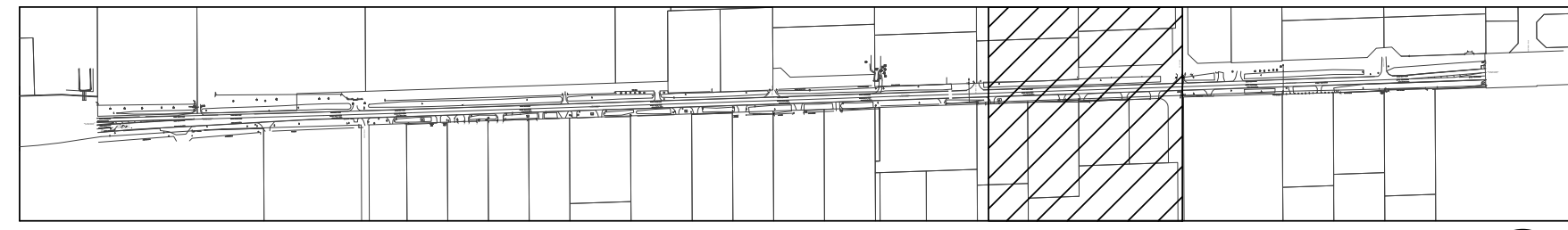
ENGINEERING PLAN
 SOUTHWEST RANCHES, FLORIDA
 DYKES RD PIPE LINING PLAN

DRAWN BY:
 J.K.S.
 APPROVED BY:
 K.M.H.
 DATE 2-17-20



SCALE AS NOTED
 PROJECT No
 CAD FILE

SHEET
 5 OF 9



KEY MAP

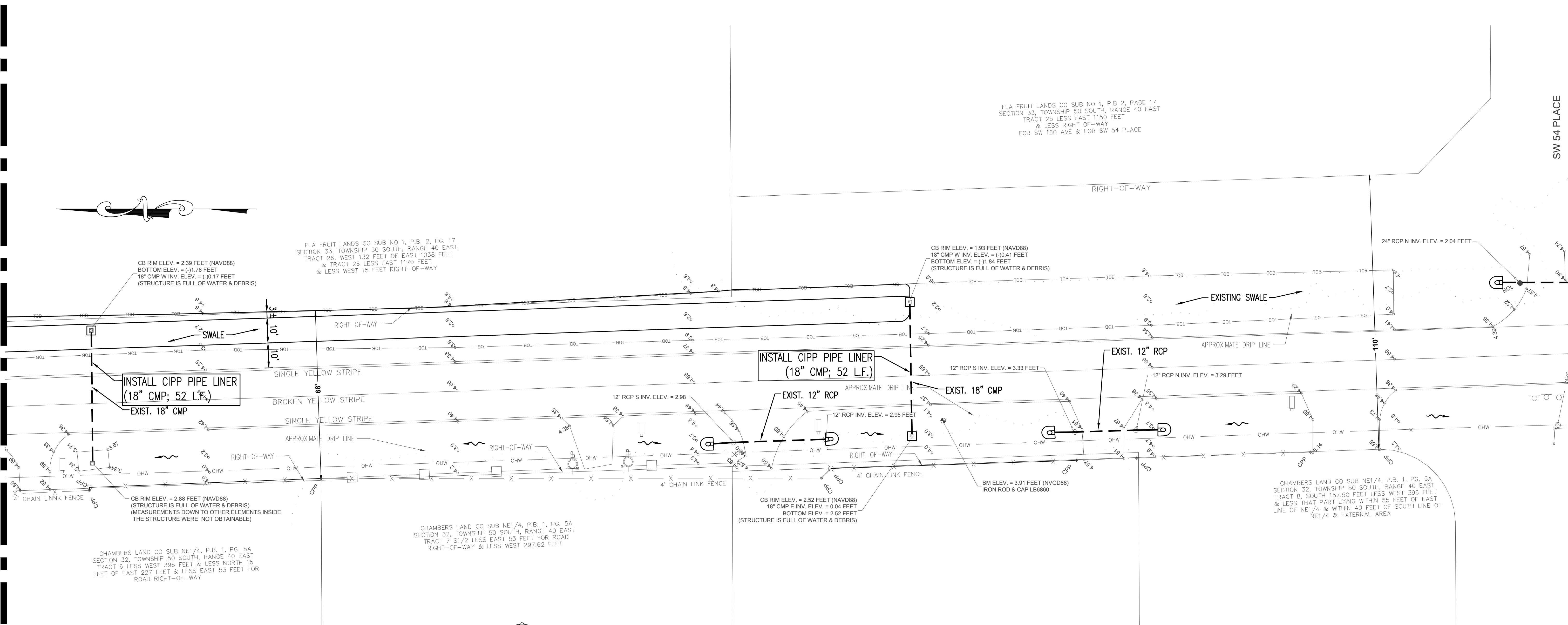


NO SCALE

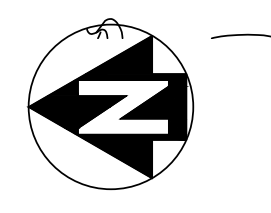
MATCHLINE (SEE SHEET 5 OF 11)

MATCHLINE (SEE SHEET 7 OF 11)

SW 54 PLACE



GRADING & DRAINAGE PLAN



SCALE: 1"=20'-0"

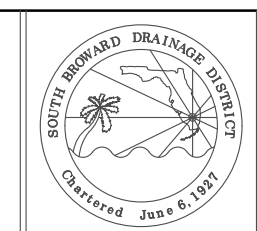
- NOTES:
- ALL ELEVATIONS ARE BASED ON NAVD '88 DATUM
 - CONVERSION FROM NAVD '88 TO NGVD '29 = 1.51'

NO	DATE	REVISION	BY	NO	DATE	REVISION	BY
1			KH				

SOUTH BROWARD DRAINAGE DISTRICT
6591 SW 160th AVE
SOUTHWEST RANCHES, FL. 33331

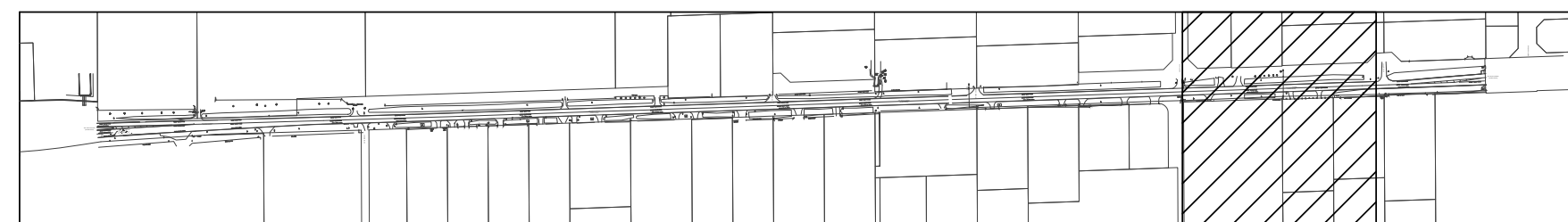
ENGINEERING PLAN
SOUTHWEST RANCHES, FLORIDA
DYKES RD PIPE LINING PLAN

DRAWN BY:
J.K.S.
APPROVED BY:
K.M.H.
DATE 2-17-20



SCALE AS NOTED
PROJECT No
CAD FILE

SHEET
6 OF 9



KEY MAP



NO SCALE

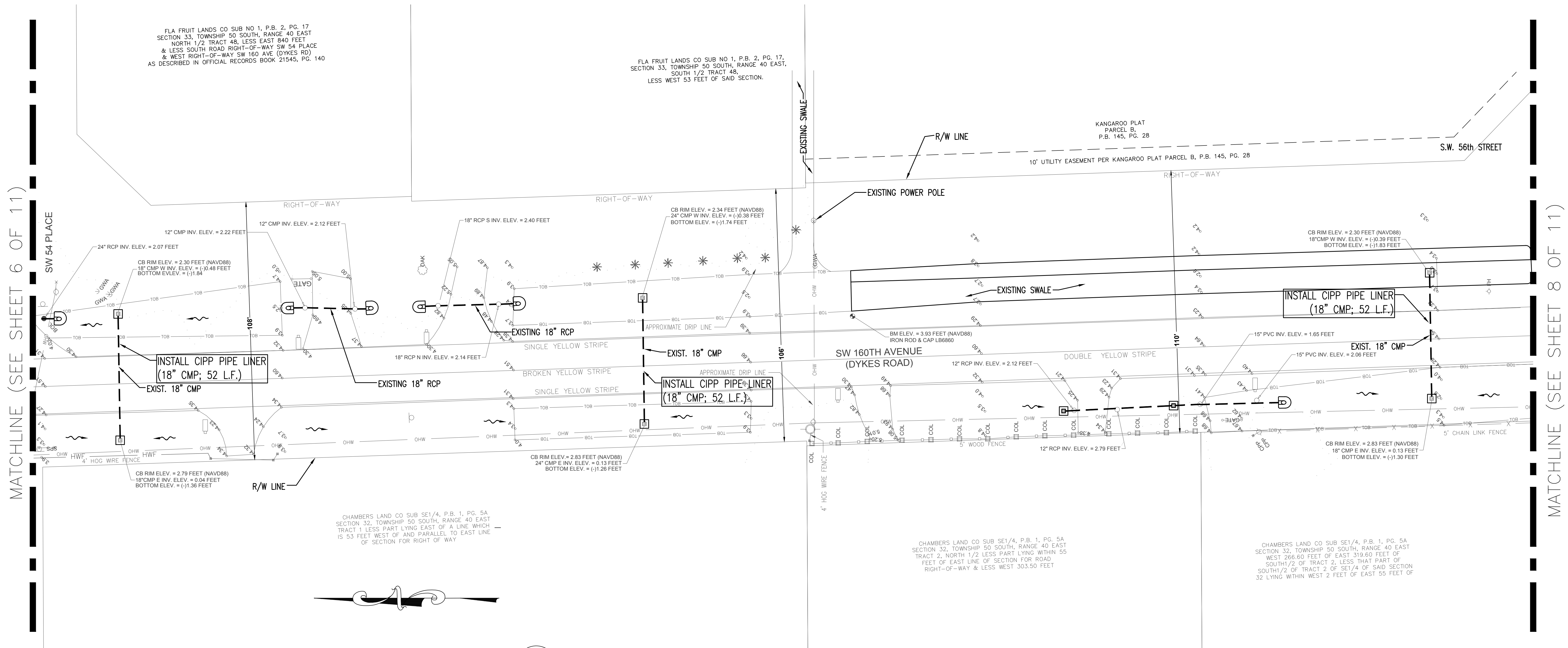
FLA FRUIT LANDS CO SUB NO 1, P.B. 2, PG. 17
SECTION 33, TOWNSHIP 50 SOUTH, RANGE 40 EAST
NORTH 1/2 TRACT 48, LESS EAST 840 FEET
& LESS SOUTH ROAD RIGHT-OF-WAY SW 54 PLACE
& WEST RIGHT-OF-WAY SW 160 AVE (DYKES RD)
AS DESCRIBED IN OFFICIAL RECORDS BOOK 21545, PG. 140

FLA FRUIT LANDS CO SUB NO 1, P.B. 2, PG. 17,
SECTION 33, TOWNSHIP 50 SOUTH, RANGE 40 EAST,
SOUTH 1/2 TRACT 48,
LESS WEST 53 FEET OF SAID SECTION.

KANGAROO PLAT
PARCEL B,
P.B. 145, PG. 28

MATCHLINE (SEE SHEET 6 OF 11)

MATCHLINE (SEE SHEET 8 OF 11)



CHAMBERS LAND CO SUB SE1/4, P.B. 1, PG. 5A
SECTION 32, TOWNSHIP 50 SOUTH, RANGE 40 EAST
TRACT 1 LESS PART LYING EAST OF A LINE WHICH
IS 53 FEET WEST OF AND PARALLEL TO EAST LINE
OF SECTION FOR RIGHT OF WAY

CHAMBERS LAND CO SUB SE1/4, P.B. 1, PG. 5A
SECTION 32, TOWNSHIP 50 SOUTH, RANGE 40 EAST
TRACT 2, NORTH 1/2 LESS PART LYING WITHIN 55
FEET OF EAST LINE OF SECTION FOR ROAD
RIGHT-OF-WAY & LESS WEST 303.50 FEET

CHAMBERS LAND CO SUB SE1/4, P.B. 1, PG. 5A
SECTION 32, TOWNSHIP 50 SOUTH, RANGE 40 EAST
TRACT 2, NORTH 1/2 LESS PART LYING WITHIN 55
FEET OF EAST LINE OF SECTION FOR ROAD
RIGHT-OF-WAY & LESS WEST 303.50 FEET

GRADING & DRAINAGE PLAN



SCALE: 1"=20'-0"

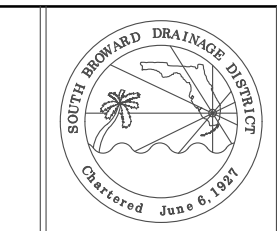
- NOTES:
- ALL ELEVATIONS ARE BASED ON NAVD '88 DATUM.
 - CONVERSION FROM NAVD '88 TO NGVD '29 = 1.51'

NO	DATE	REVISION	BY	NO	DATE	REVISION	BY
1			KH				

SOUTH BROWARD DRAINAGE DISTRICT
6591 SW 160th AVE
SOUTHWEST RANCHES, FL. 33331

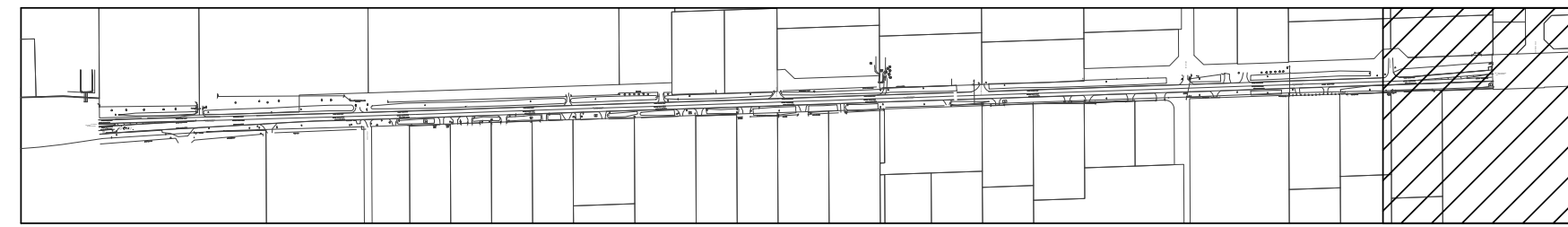
ENGINEERING PLAN
SOUTHWEST RANCHES, FLORIDA
DYKES RD PIPE LINING PLAN

DRAWN BY:
J.K.S.
APPROVED BY:
K.M.H.
DATE 2-17-20

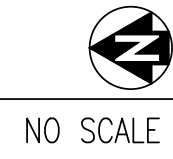


SCALE AS NOTED
PROJECT No
CAD FILE

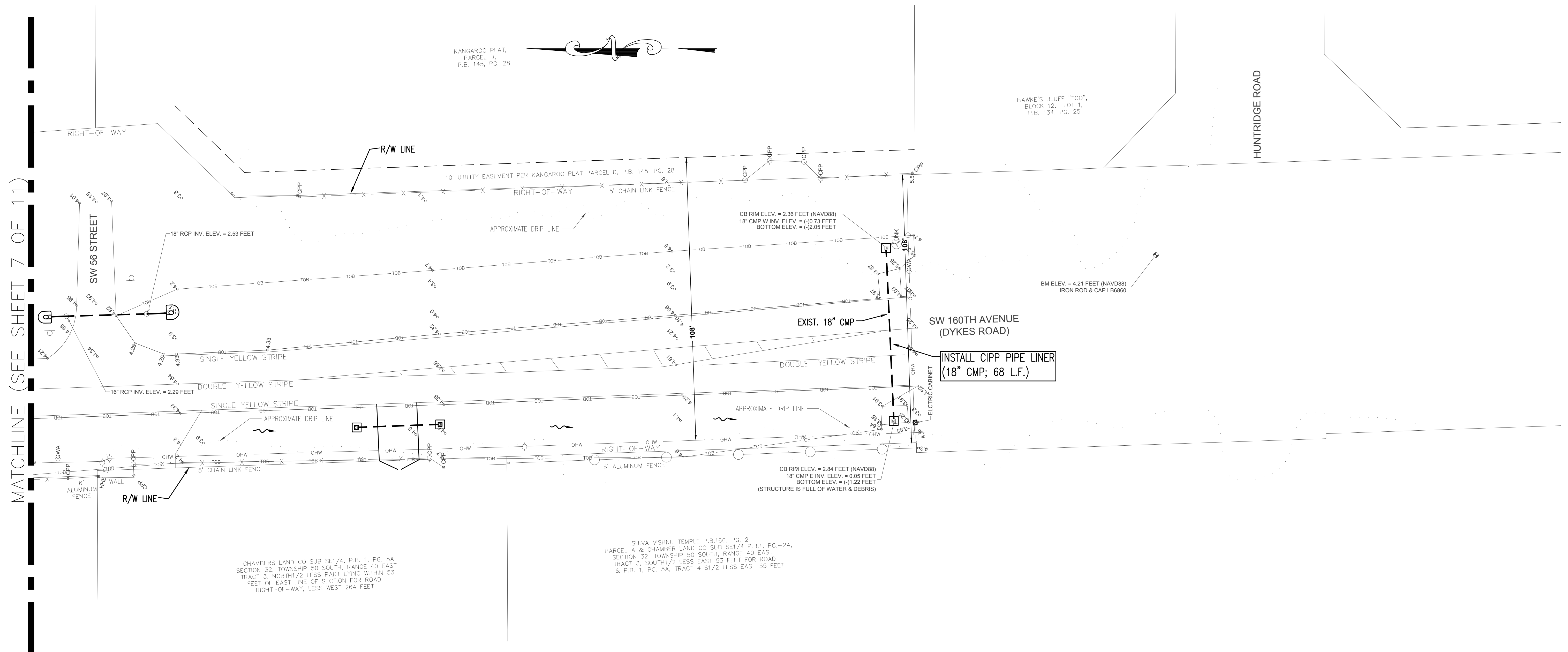
SHEET
7 OF 9



KEY MAP



NO SCALE



MATCHLINE (SEE SHEET 7 OF 11)

KANGAROO PLAT,
PARCEL D,
P.B. 145, PG. 28

HAWKE'S BLUFF "TOO",
BLOCK 12, LOT 1,
P.B. 134, PG. 25

HUNTRIDGE ROAD

SW 160TH AVENUE
(DYKES ROAD)

INSTALL CIPP PIPE LINER
(18" CMP; 68 L.F.)

CB RIM ELEV. = 2.84 FEET (NAVD88)
18" CMP E INV. ELEV. = 0.05 FEET
BOTTOM ELEV. = (-)12.22 FEET
(STRUCTURE IS FULL OF WATER & DEBRIS)

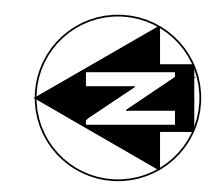
CB RIM ELEV. = 2.36 FEET (NAVD88)
18" CMP W INV. ELEV. = (-)0.73 FEET
BOTTOM ELEV. = (-)12.05 FEET

BM ELEV. = 4.21 FEET (NAVD88)
IRON ROD & CAP LB6860

CHAMBERS LAND CO SUB SE1/4, P.B. 1, PG. 5A
SECTION 32, TOWNSHIP 50 SOUTH, RANGE 40 EAST
TRACT 3, NORTH 1/2 LESS PART LYING WITHIN 53
FEET OF EAST LINE OF SECTION FOR ROAD
RIGHT-OF-WAY, LESS WEST 264 FEET

SHIVA VISHNU TEMPLE P.B.166, PG. 2,
PARCEL A & CHAMBER LAND CO SUB SE1/4 P.B.1, PG.-2A,
SECTION 32, TOWNSHIP 50 SOUTH, RANGE 40 EAST
TRACT 3, SOUTH 1/2 LESS EAST 53 FEET FOR ROAD
& P.B. 1, PG. 5A, TRACT 4 S1/2 LESS EAST 55 FEET

GRADING & DRAINAGE PLAN



SCALE: 1"=20'-0"

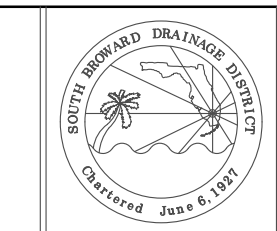
NOTES:
• ALL ELEVATIONS ARE BASED ON NAVD '88 DATUM
• CONVERSION FROM NAVD '88 TO NGVD '29 = 1.51'

NO	DATE	REVISION	BY	NO	DATE	REVISION	BY
1			KH				

SOUTH BROWARD DRAINAGE DISTRICT
6591 SW 160th AVE
SOUTHWEST RANCHES, FL. 33331

ENGINEERING PLAN
SOUTHWEST RANCHES, FLORIDA
DYKES RD PIPE LINING PLAN

DRAWN BY:
J.K.S.
APPROVED BY:
K.M.H.
DATE 2-17-20



SCALE AS NOTED
PROJECT No
CAD FILE

SHEET
8 OF 9

GENERAL NOTES

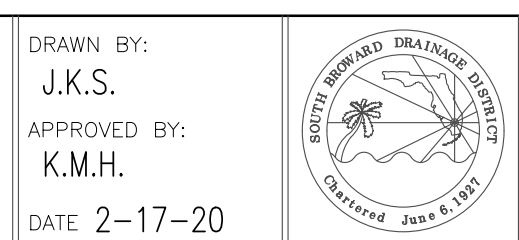
1. All elevations shown on this plan are based on the North American Vertical Datum of 1988 (NAVD 88). The conversion from NGVD 29 to NAVD 88 is: NAVD 88 = NGVD 29 - 1.51'
2. Contractor shall verify the location, size, material, and depth of all existing drainage lines to be lined prior to beginning work. In addition, Contractor shall verify the location, size, material, and depth of all existing utility lines prior to beginning work.
3. Contractor shall exercise extreme caution when working under and around existing overhead electric lines. Contractor shall notify FPL on any safety issues regarding overhead power lines.
4. Contractor shall submit a maintenance of Traffic (MOT) Plan to the Town of Southwest Ranches for approval for any impacts to the flow of traffic on Dykes Road or side streets.
5. Contractor shall ensure that access is maintained for all driveways within the project limits as it relates to the Contractor's work. Contractor shall coordinate with property owners on any impacts to driveway access, as necessary.
6. The limits of the project area shall be completely restored. The Contractor shall be responsible to completely restore the limits of construction including, but not limited to, sod, irrigation, pavement, and curbing.
7. The Contractor shall be responsible for obtaining a dewatering permit from the South Florida Water Management District (SFWMD) for any dewatering activities, as applicable (at the sole cost to the Contractor).
8. Contractor shall comply with all requirements of Section 403.0885, Florida Statutes for NPDES, as applicable; including, but not limited to, filing a Notice of Intent.
9. Prior to installing the CIPP, Contractor shall clean and televise each run to verify the proper installation of the CIPP.

NO	DATE	REVISION	BY	NO	DATE	REVISION	BY
1			KH				

SOUTH BROWARD DRAINAGE DISTRICT
 6591 SW 160th AVE
 SOUTHWEST RANCHES, FL. 33331

ENGINEERING NOTES
SOUTHWEST RANCHES, FLORIDA
DYKES RD PIPE LINING PLAN

DRAWN BY:
 J.K.S.
 APPROVED BY:
 K.M.H.
 DATE 2-17-20



SCALE: AS NOTED
 PROJECT No:
 CAD FILE: